

Creating customized openSUSE versions with SUSE Studio

Cornelius Schumacher
Daniel Bornkessel

SUSE Linux Products GmbH



Novell.



Overview

SUSE Studio Overview

Demo

More appliances

SUSE Studio Overview



SUSE Studio

Welcome - SUSE Studio - Mozilla Firefox

File Edit View History Bookmarks Tools Help

http://susestudio.com/

SUSE studio my appliances Sign In

Your Linux appliance construction kit

[See a screencast](#)

[Build an appliance](#)

What can you do with SUSE Studio?

- Create a tuned server appliance, containing your application and just enough operating system components
- Spin a live CD or DVD with just the packages and software you need
- Create a ready-to-run VMware virtual appliance
- Create a live USB key and carry your Linux system with you wherever you go
- Build a hard disk image for preloading onto hardware
- Install from your live CD, DVD or USB key to your hard drive

SUSE Studio Alpha Signup

We are currently testing SUSE Studio with a limited number of users. If you'd like to be notified as soon as we are ready to send more invites, enter your email address below:

Email: [Sign me up!](#)

[Wiki](#) | [Forum](#) | [Twitter](#) | [Screencast](#) | [Logos & badges](#) | [Jobs](#)

© 2008 Novell, Inc.



Vision

- Enable community to maintain customized openSUSE versions
- Create and share customized Linux distributions and software appliances
(appliance: application bundled with complete required software stack including operating system and configuration)
- Easy
- Fast
- Accessible to everybody



Use cases

- Live CDs, DVDs (Mono)
- Live USB sticks (openSUSE with KDE 4.2)
- Demo CDs (Kraft)
- Server appliances (LAMP server)
- Installation images for specific hardware (Eee PC)
- Customized distribution (Grandma's openSUSE)
- Specially targeted distributions (Edu-CD)
- Conference CDs (FOSDEM presentations)
- ...

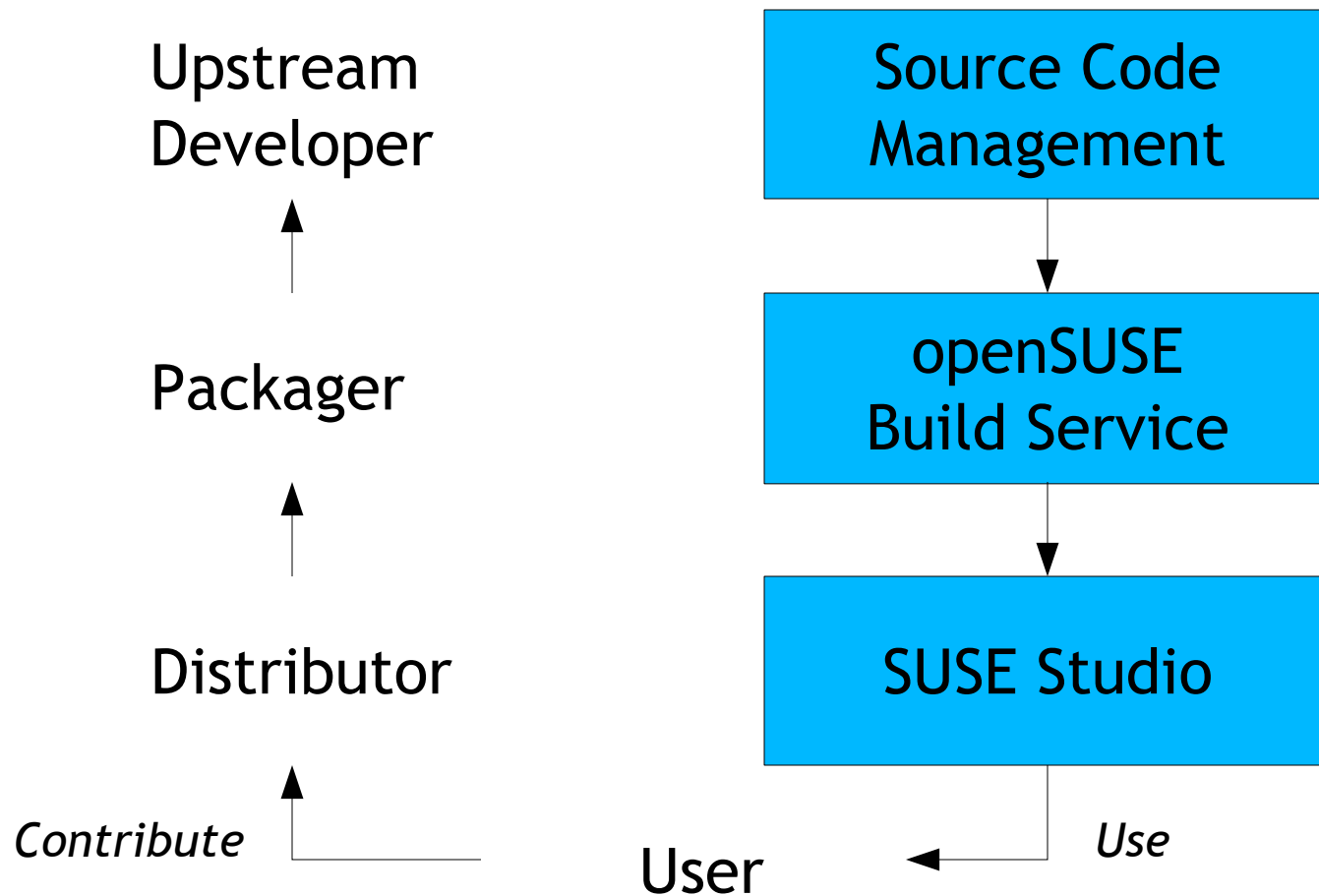


SUSE Studio

- Web application
 - Building and testing appliances on the server
- Focus on great user interface
- Appliances get created by cloning of templates and other existing appliances
- openSUSE Build Service integration



Contribution Stack





SUSE Studio Workflow

Create - Test - Share



Create

The screenshot shows the SUSE Studio web interface in a Mozilla Firefox browser window. The browser address bar shows the URL `http://susestudio.com/appliance/edit/1990`. The page title is "Edit Appliance - SUSE Studio - Mozilla Firefox". The browser menu includes File, Edit, View, History, Bookmarks, Tools, and Help. The page header includes the SUSE Studio logo, navigation links for "my appliances" and "appliance editor", a "Report bug" button, and user information for "Cornelius Schumacher (admin)" with a "Sign out" link.

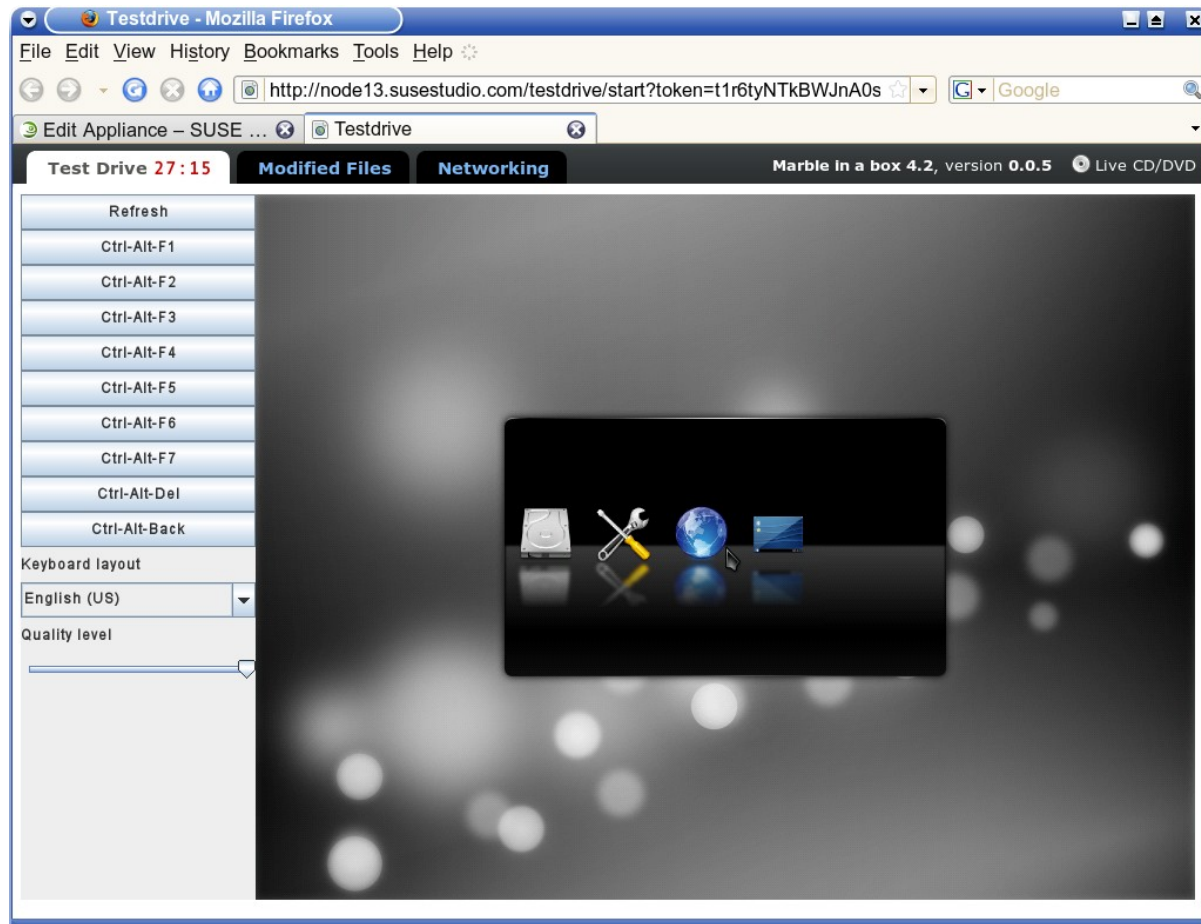
The main content area is titled "Marble in a box 4.2" and features a tabbed interface with "Start", "Software", "Configuration", "Overlay files", and "Build" tabs. The "Start" tab is active, displaying a welcome message in a yellow speech bubble: "Welcome to SUSE Studio! This is the SUSE Studio editor. The tabs above allow you to configure the different aspects of your appliance. When you're ready, visit the Build tab to generate your final appliance image. But first, it's important to give your appliance a name. Your appliance's name will be used in the boot screen, and in several other places." To the right of the message is a cartoon robot character.

On the left side, there is a sidebar with "Appliance information" showing: "Live CD/DVD based on openSUSE 11.0", "Download size 997 MB", "3 patterns selected", "15 packages selected", and "361 total packages". Below this is a "Messages" section with three tips: "Tip: Install yast2-live-installer to make your live system installable", "Tip: Your appliance will most likely not fit on a CD (700MB limit).", and "Tip: During development, you may want to use the disk image format to build your appliance, to take advantage of the modified files feature in Testdrive."

At the bottom of the main content area, there is a form labeled "Appliance name:" with the text "Marble in a box 4.2" entered. Below the form are navigation links: "Wiki | Forum | Chat (IRC) | Twitter | Screencast | Logos & badges | Jobs". At the very bottom, it states "You are currently using 12.4GB (25%) of your 49GB." and "© 2008 Novell, Inc."

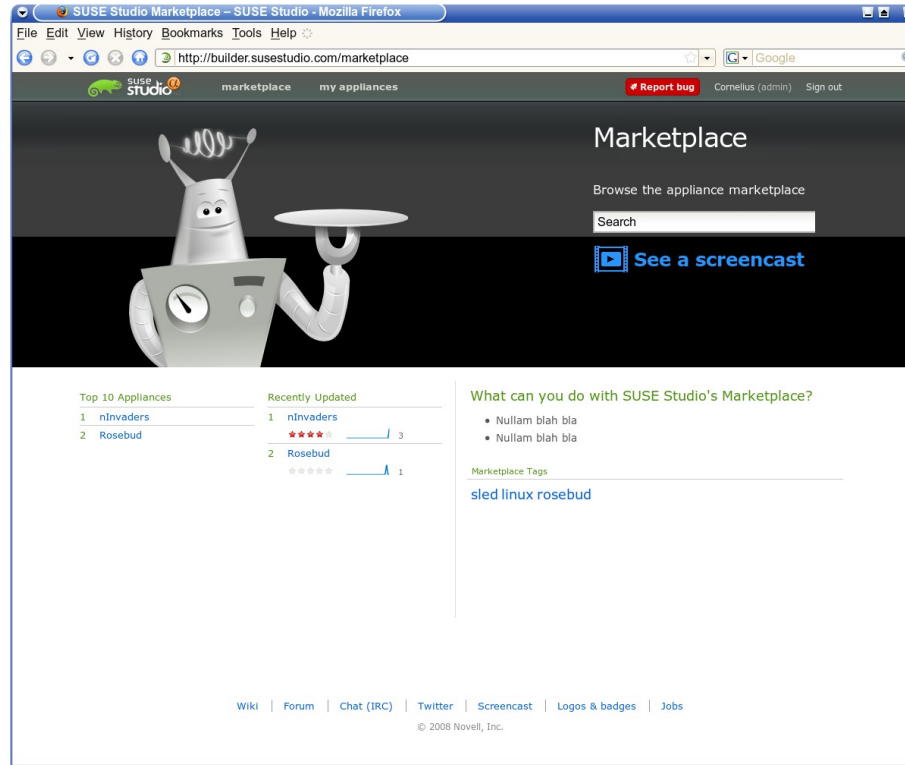


Test





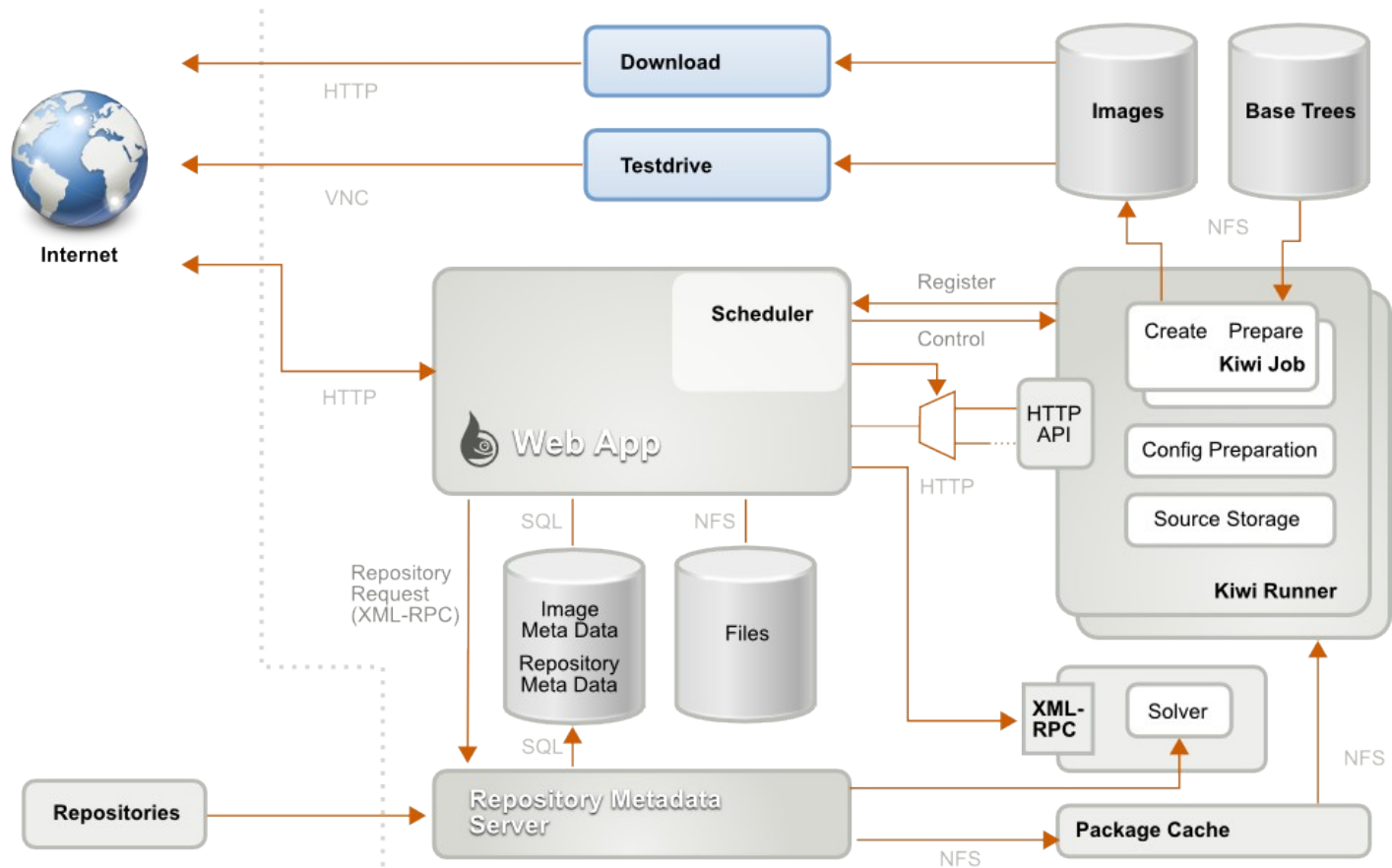
Share



(under construction)



Architecture





Implementation

- Kiwi
- Rails
- KVM
- libsatsolver
- OpenID



KIWI



Demo



More Appliances



More Appliances





Conclusion

- <http://susestudio.com>
- Currently we run an Alpha for invited users
- Mailing list: studio-users@listx.novell.com
- IRC: *#susestudio* on freenode
- Meet us at the openSUSE booth

Novell®

General Disclaimer

This document is not to be construed as a promise by any participating company to develop, deliver, or market a product. Novell, Inc., makes no representations or warranties with respect to the contents of this document, and specifically disclaims any express or implied warranties of merchantability or fitness for any particular purpose. Further, Novell, Inc., reserves the right to revise this document and to make changes to its content, at any time, without obligation to notify any person or entity of such revisions or changes. All Novell marks referenced in this presentation are trademarks or registered trademarks of Novell, Inc. in the United States and other countries. All third-party trademarks are the property of their respective owners.

This work is licensed under the Creative Commons Attribution-Noncommercial-Share Alike 2.5 License. To view a copy of this license, visit <http://creativecommons.org/licenses/by-nc-sa/2.5/>.

For other licenses contact author.



Novell.