

Usability Research for KDE at openSUSE

Stephan Binner, Will Stephenson
KDE Software Engineers
SUSE LINUX Products GmbH



Novell.



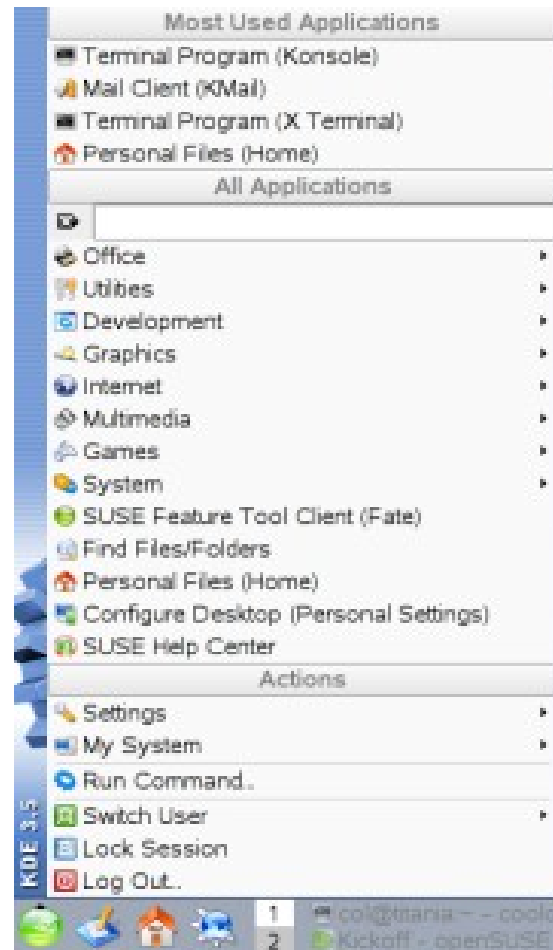
Motivation

- SUSE wants to drive innovations
- Team analyzed part with best rate of work / benefit
- Start menu was most obvious to us
- Ongoing discussion about the KDE 4 start menu

Several Approaches for Menu NG

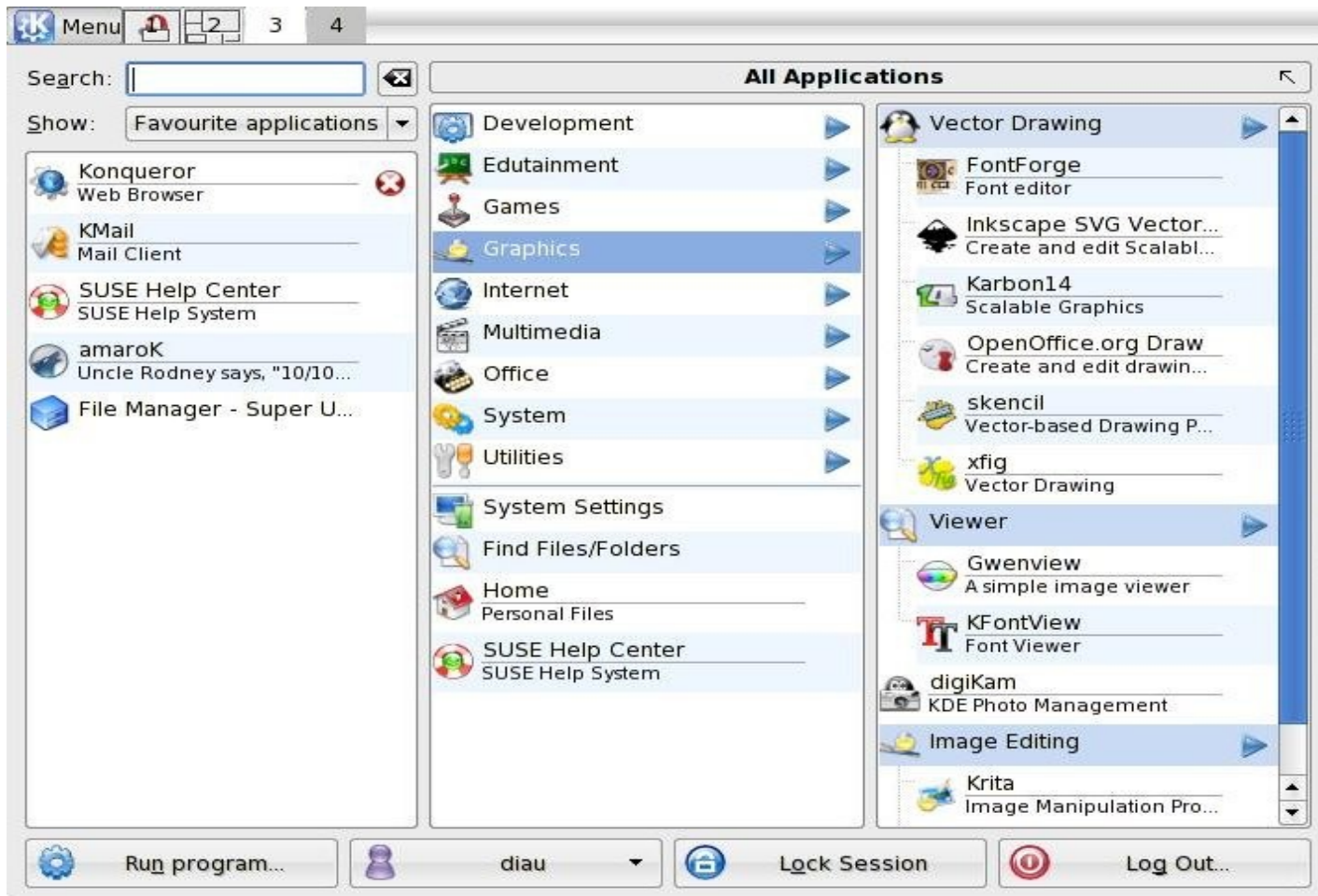


SUSE Linux 10.x





Tasty Menu





Kbfx





Celeste Paul's Application Browser

Business & Office



Acrobat Reader
Adobe PDF viewer
More information...



KAddressBook
Contact management
More information...



Kchart
Chart software
More information...



KFax
Fax viewer
More information...



Kivio
Flowchart software
More information...



KPresenter
Slide show editor
More information...



KPDF
KDE PDF viewer
More information...



KSpread
Spreadsheet software
More information...



OpenOffice.org
Office suite
More information...



TaskJuggler
Project management
More information...

Related Applications Not In This Category



Kcalc
KDE calculator
More information...



KMail
KDE email client
More information...



The GIMP
Graphics editor
More information...

More related applications

Related Categories

Development

- Qt Designer
- Cervisia
- KBabel
- More...

Graphics

- The GIMP
- KDVI
- KolourPaint
- More...

Network

- Konqueror
- Kopete
- KMail
- More...



SLED 10: GNOME Desktop Menu

Search:

Show: **Favorite Applications**

Firefox
Web Browser

Evolution
Mail and Calendar

Banshee
Music Player

OpenOffice.org
Writer
Word Processor

F-Spot
Photo Browser

Home Folder
File Browser

[More Applications...](#)

System

- Help**
- Control Center**
- Install Software**
- Lock Screen ...**
- Log Out ...**

Status

- Hard Drive**
20G Free / 33G Total
- Network: Wireless**
Connected to: pork...

Interfaces and Application Team



Picture taken on usual work day...





Interfaces and Applications Team

- Team Lead
- KDE Developers
 - contribute to KDE project, work on openSUSE integration
 - Kickoff, Kerry, KNetworkManager, sysinfo:/, ...
- Usability Experts
 - Kickoff, openSUSE Survey, Novell Customer Center testing, YaST card sort study, YaST style guide, ...
- Internationalization Specialist
 - Font rendering, input methods, ...
- Web Designer
 - openSUSE updater icons, new wiki layout proposal, ...

Start Menu Usability Study



Setup of the Usability Study

- Testing different start menus
- Finding strengths of them using comparable tests
- 10 users per test cohort
 - Form about user habits
 - Video-Taping of 13 tasks
 - Another form about impressions
- Development of a prototype that tries to unify the seen strengths
- Another 10 users test prototype
- Inclusion of results in final product



Tasks

Task 1: Change desktop background and use file ...

Task 2: Find, open and close a PDF document with name ...

Task 3: Find and open a recently used office text document with name ...

Task 4: Find and open a mp3-file located in the CD-ROM drive with name ...

Task 5: Lock screen

Task 6: Open web browser, open and close web page with URL ...

Task 7: Search for all office text documents containing name ...

Task 8: Change start menu: remove entry with name ...

Task 9: Change start menu: add application ... to the start menu

Task 10: Find rules of the game ...

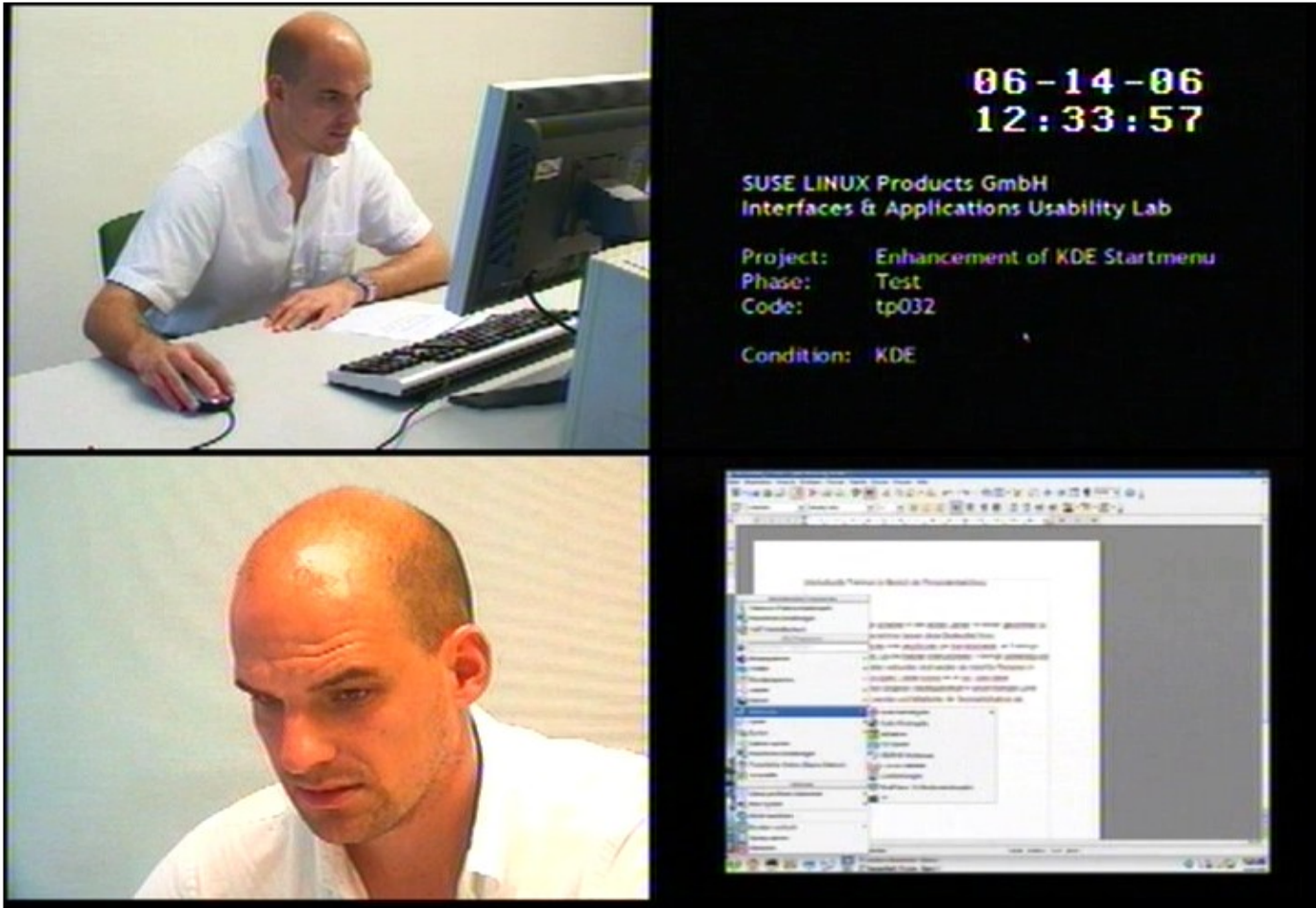
Task 11: Find information about "how to add a printer to the system"

Task 12: Change start menu: Add office text document with name ...

Task 13: Shut down system



Example

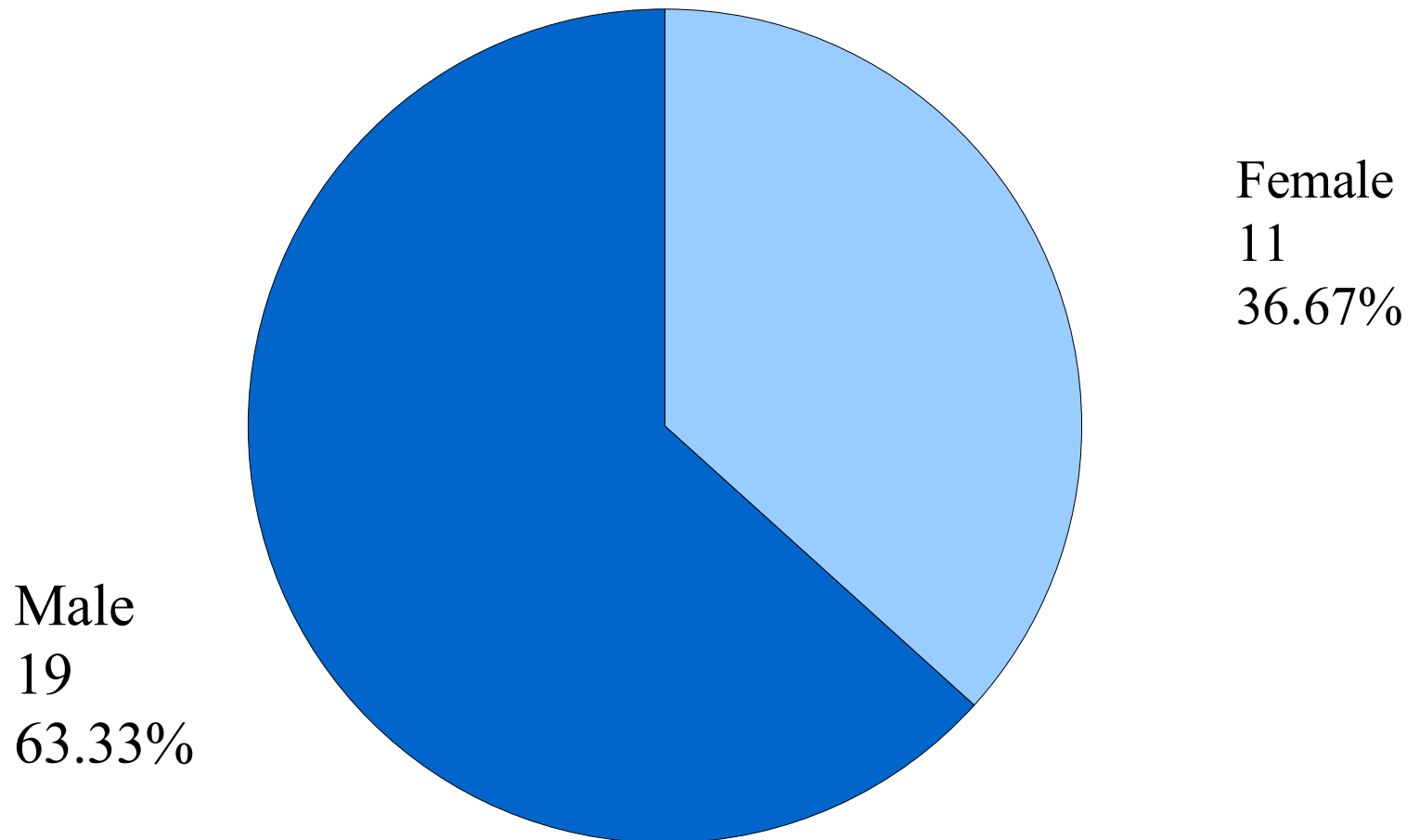


The Participants

Sample Description

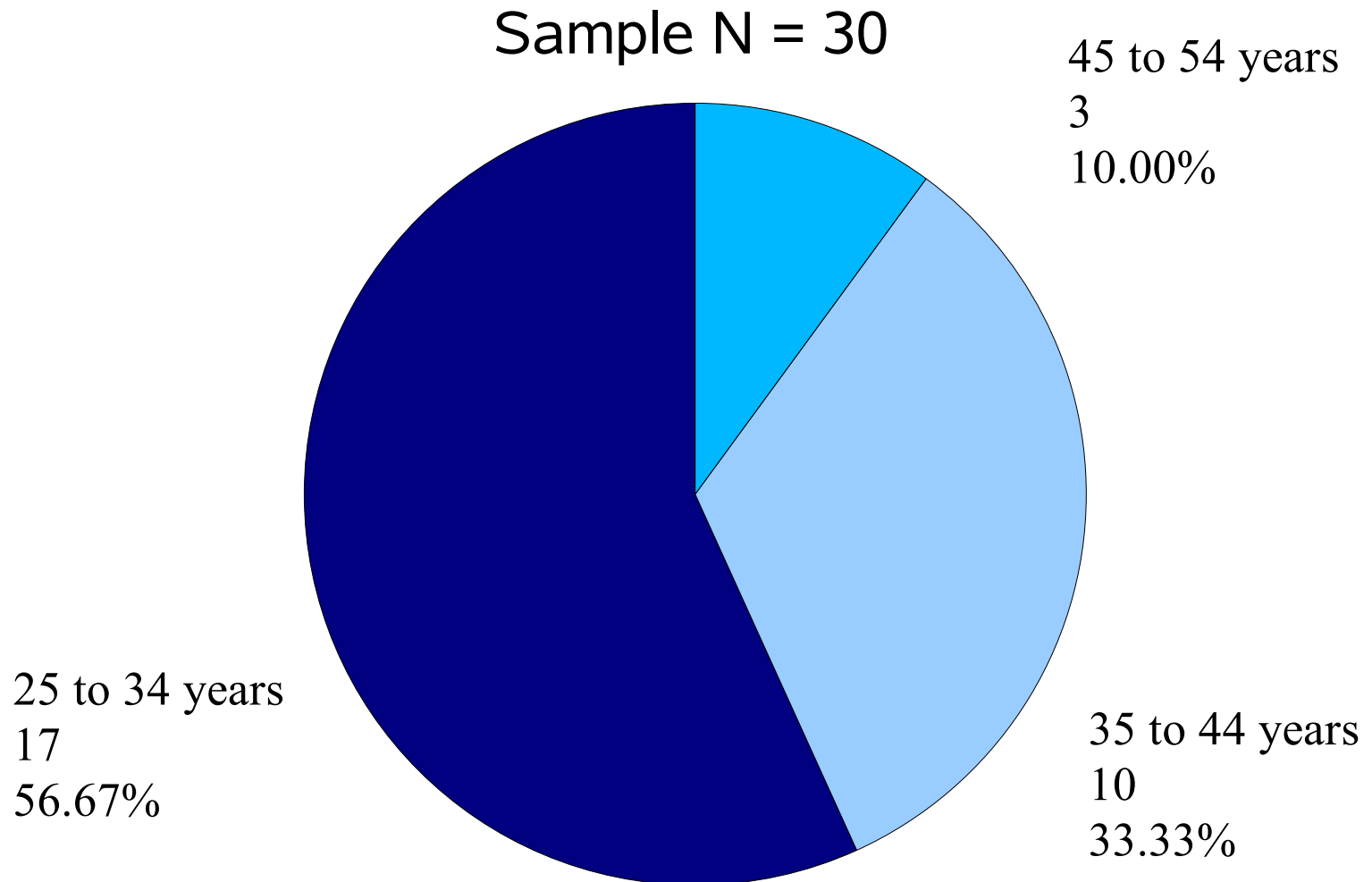
Gender Dispersal (Groups: KDE Classic, KDE Kick Off, Vista)

Sample N = 30



Sample Description

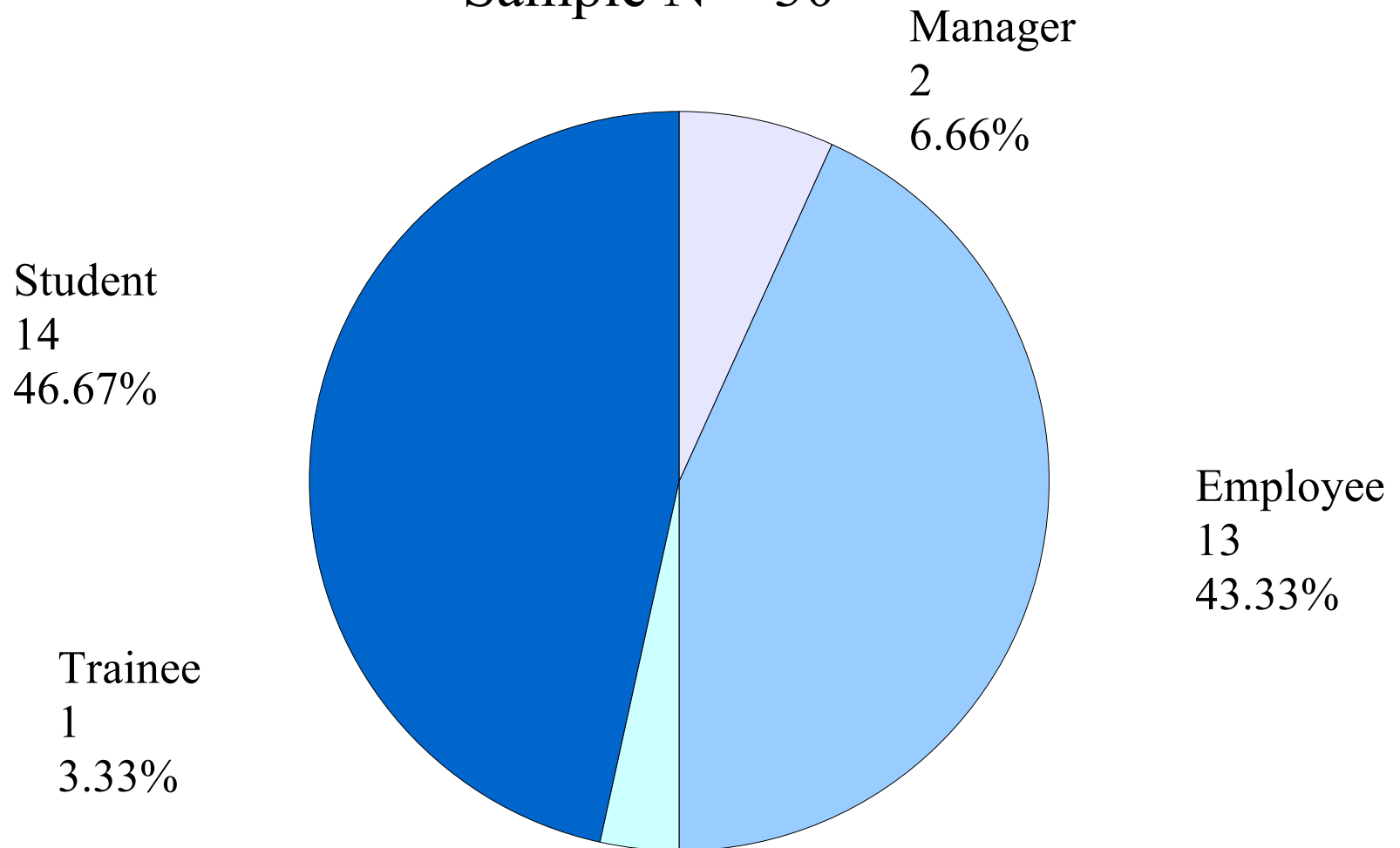
Age Dispersal (Groups: KDE Classic, KDE Kick Off, Vista)



Sample Description

Profession Status (Groups: KDE Classic, KDE Kick Off, Vista)

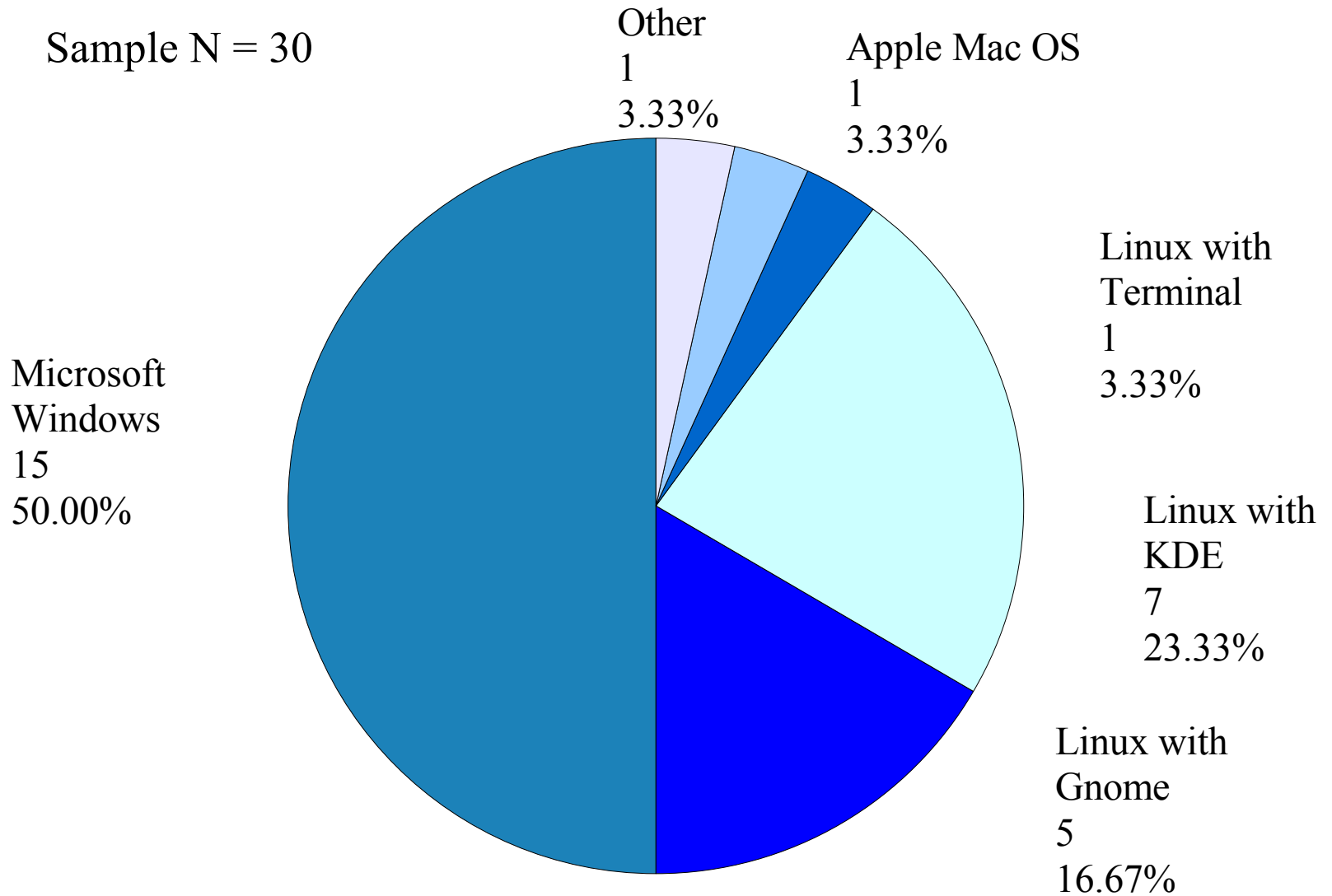
Sample N = 30



Sample Description

“My Start Menu” (Groups: KDE Classic, KDE Kick Off, Vista)

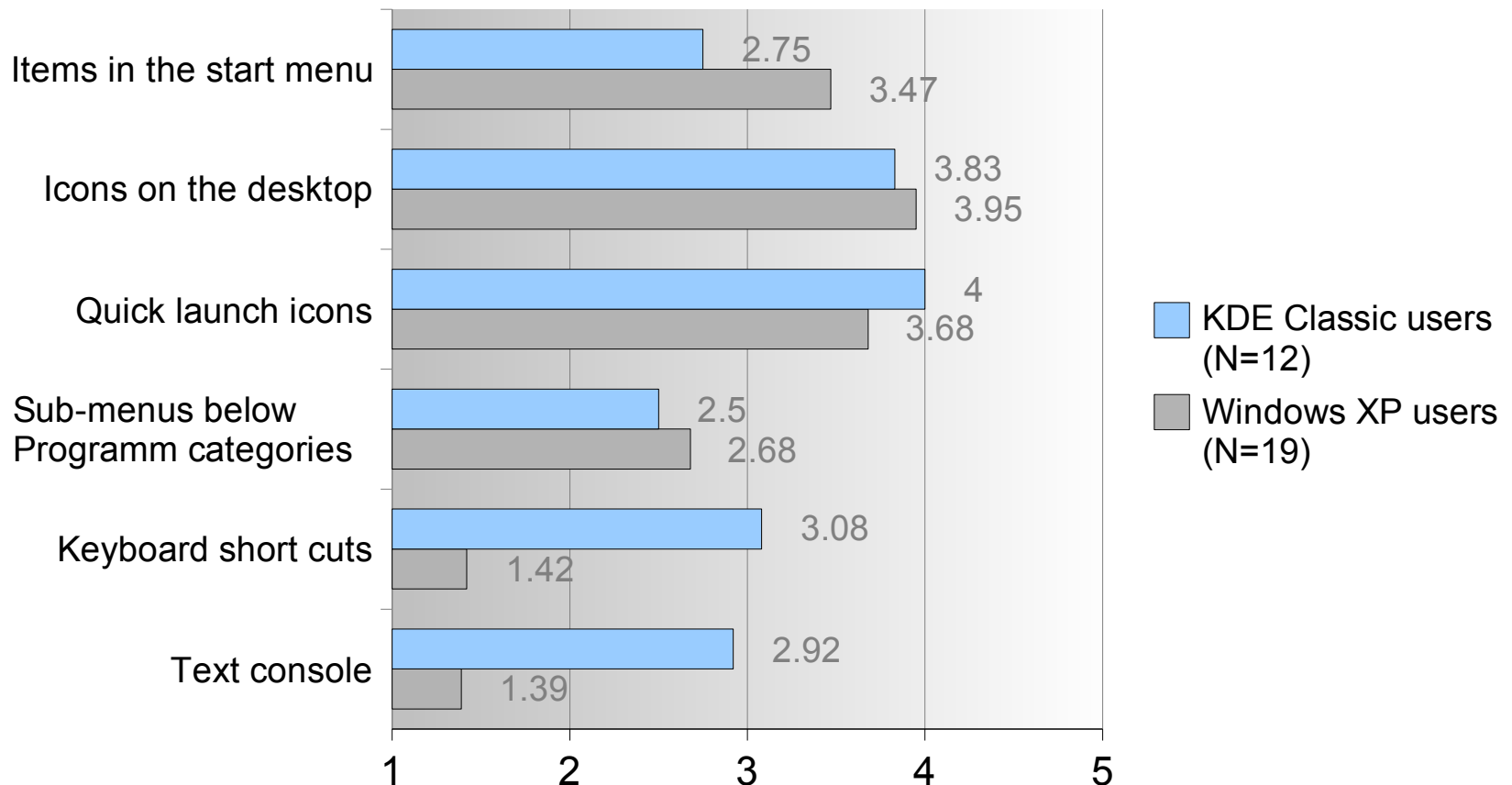
Sample N = 30



Start of Applications

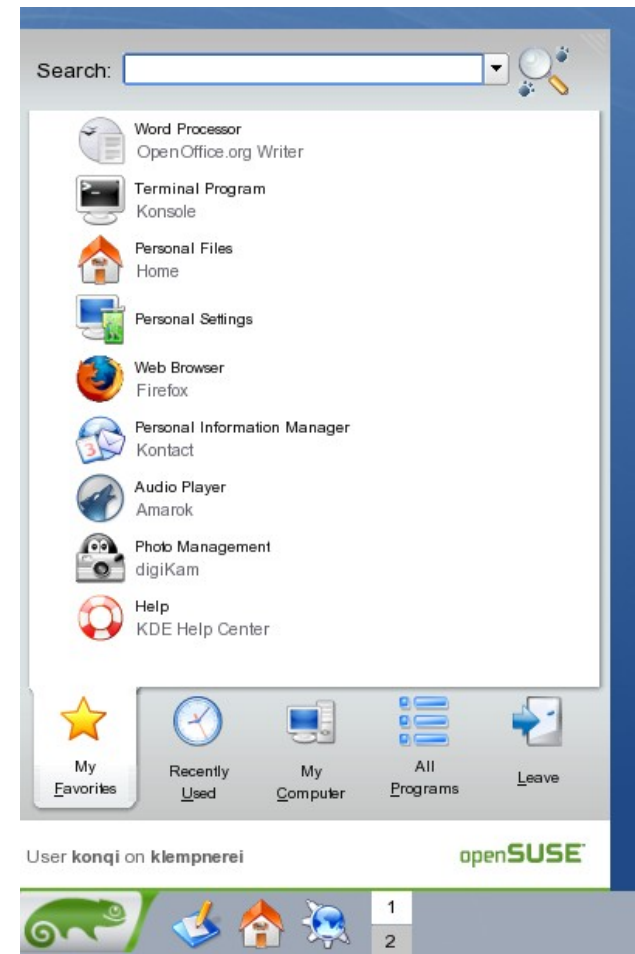
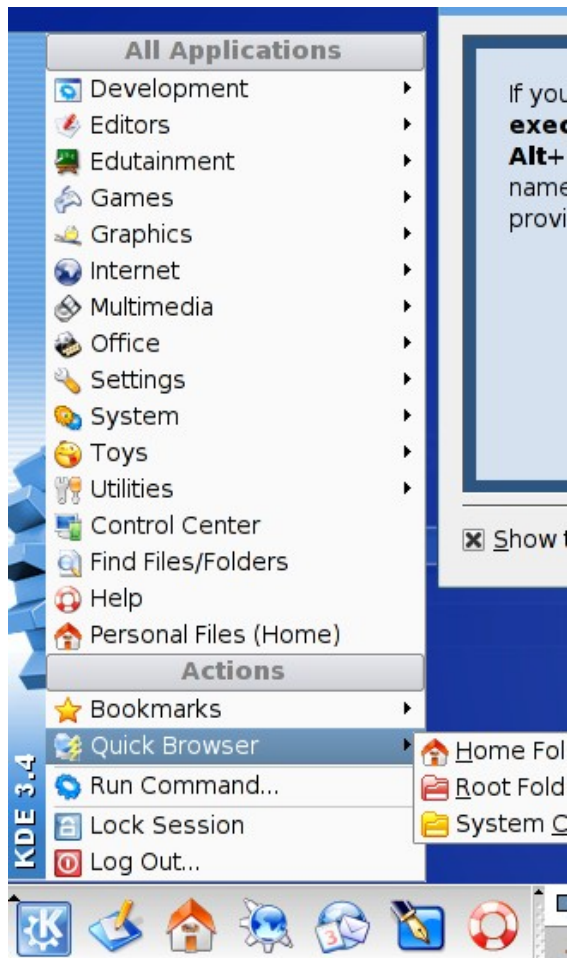
Group independent sample N = 31

Question: How often do you start applications via...



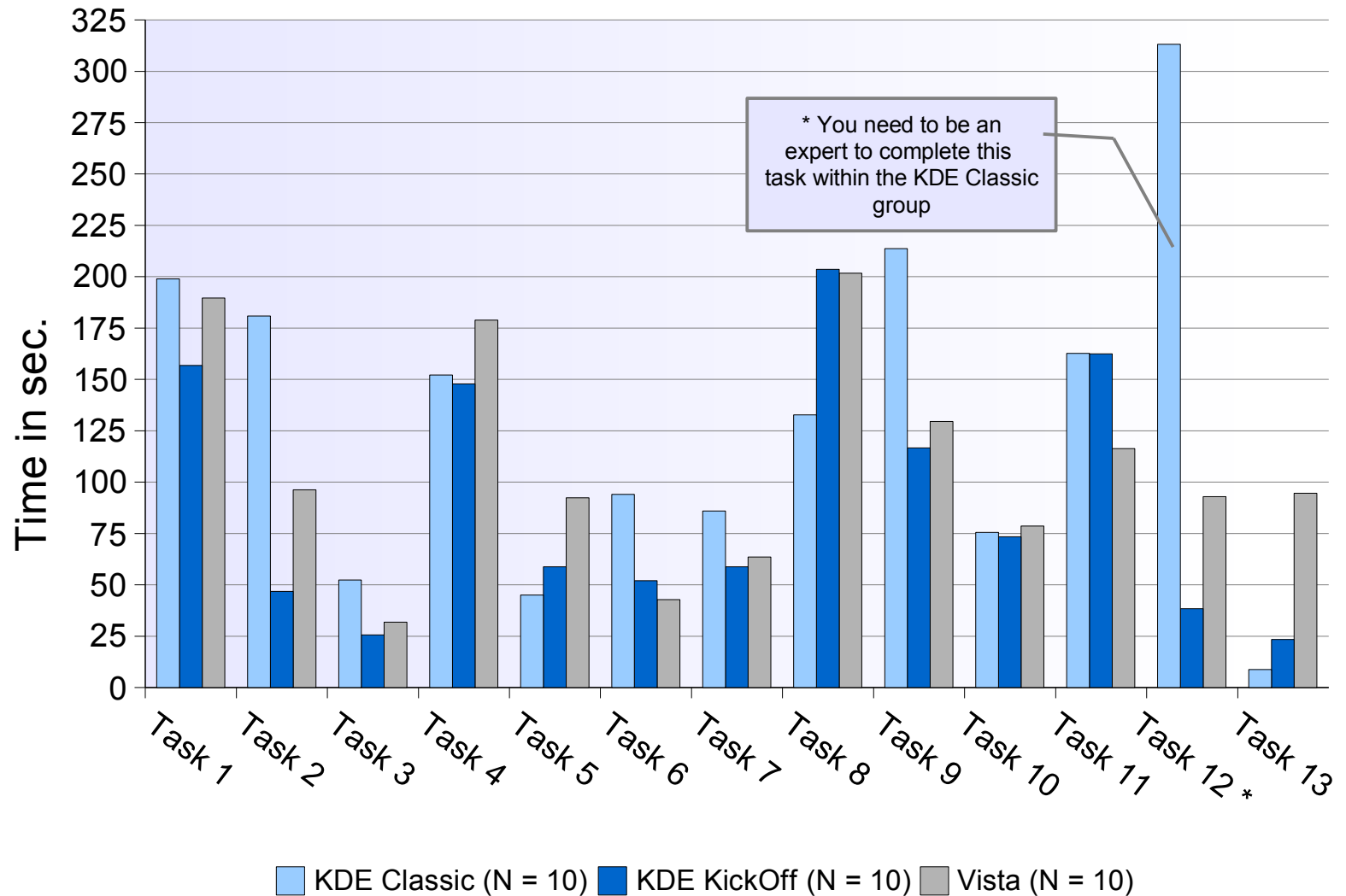
Kickoff Design and Testing

Our Design



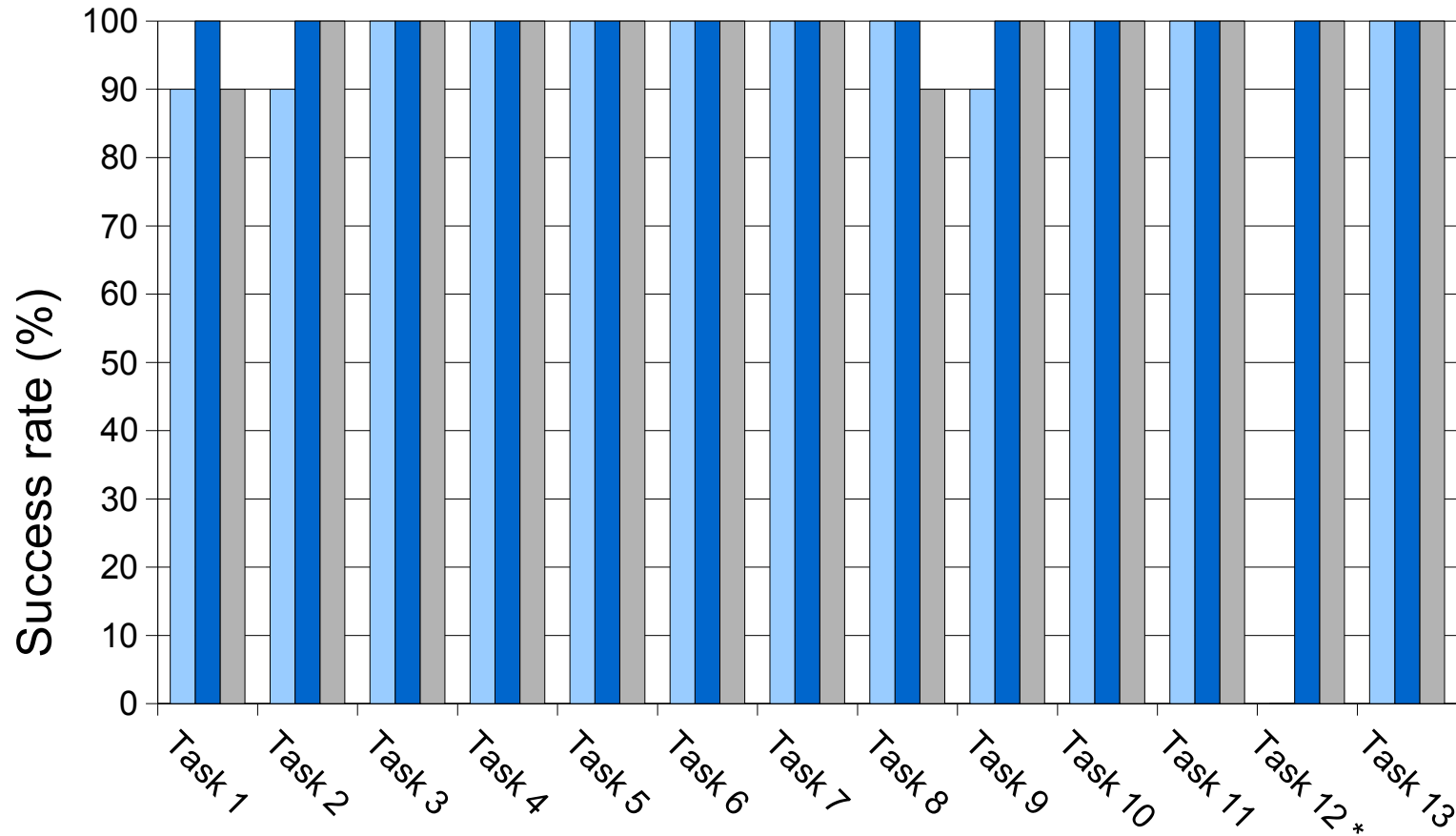
Task Completion Time

Task 1 to 13 - Lower Values Represent Better Scores



Success Rate of Task Completion

Task 1 to 13

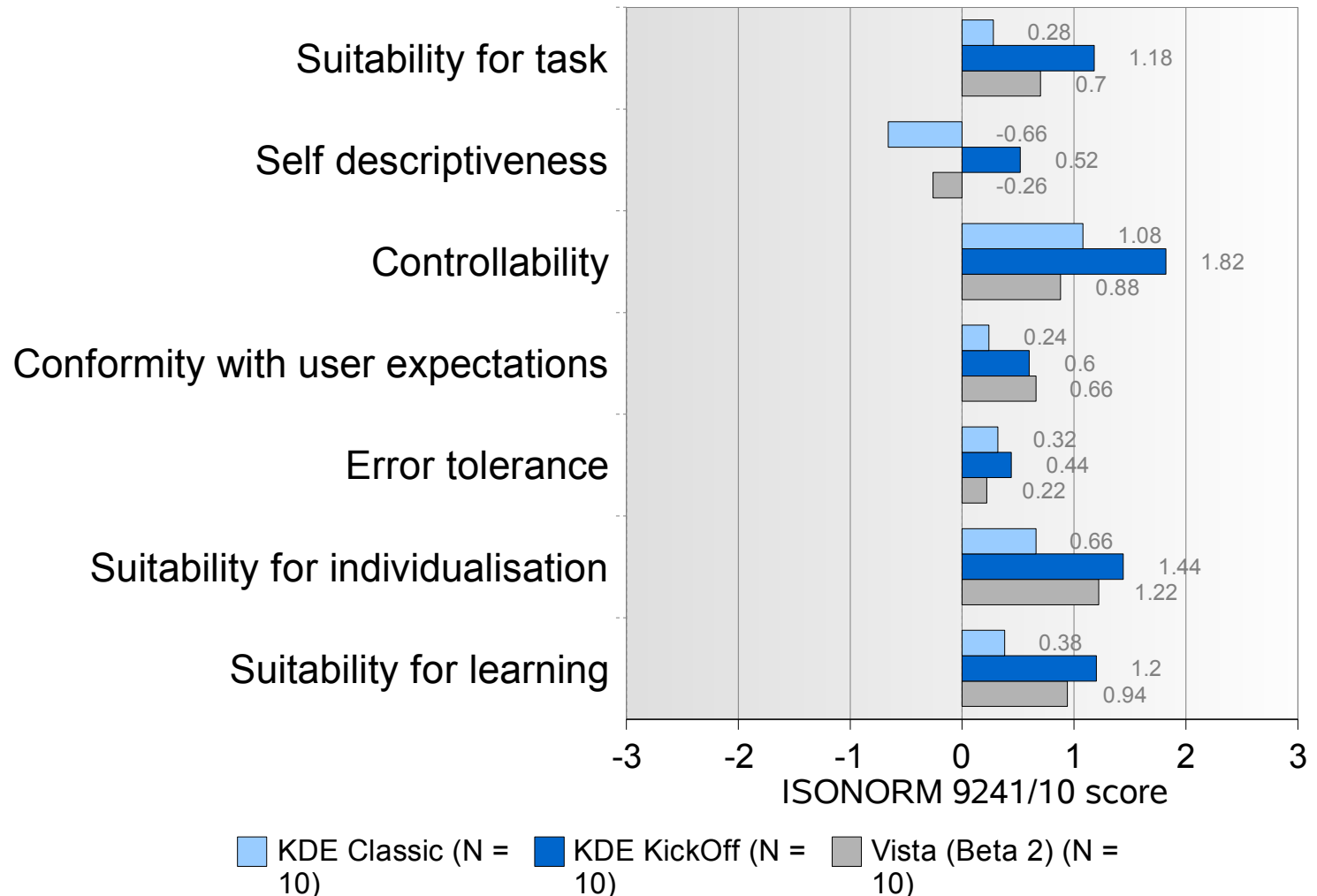


* You need to be a real expert to complete task 12 in the KDE Classic group with success

■ KDE Classic (N = 10) ■ KDE KickOff (N = 10) ■ Vista (Beta 2) (N = 10)

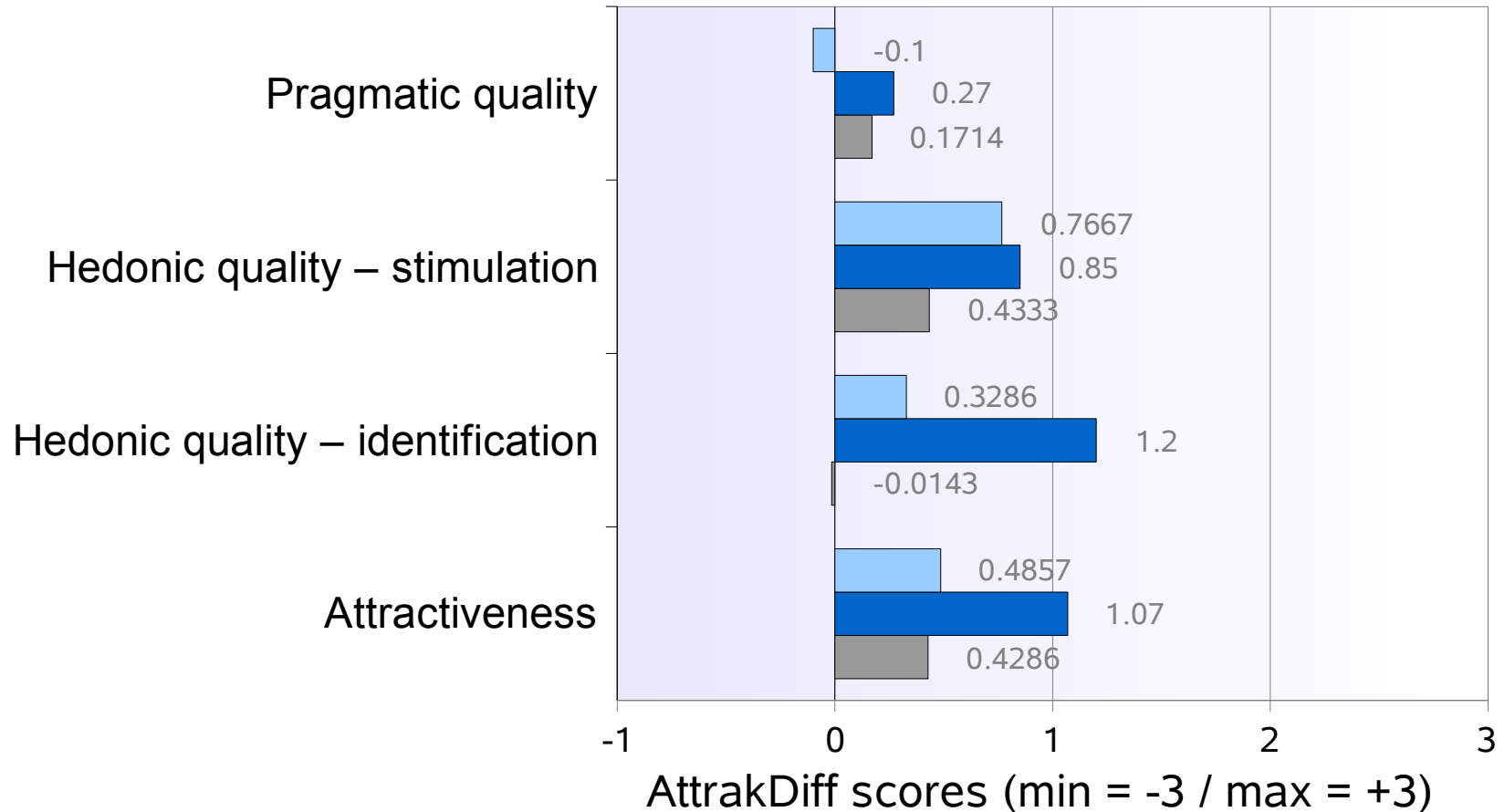
ISONORM Questionnaire by Prümper & Anft

Mean of 5 Questions in 7 Categories



AttrakDiff by Hassenzahl

4 Categories Representing Different Aspects of Attractiveness



Legend: KDE Classic (N = 10) | KDE KickOff (N = 10) | VISTA Beta 2 (N = 10)

Video Time

General Information



Mailing-Lists

opensuse-kde@opensuse.org

Discussion about KDE in the openSUSE distribution

opensuse-usability@opensuse.org

Help to improve the usability in openSUSE

Subscription: <mailto:<listname>+subscribe@opensuse.org>



openSUSE Build Service Repositories

KDE:KDE3

Latest released KDE for released distributions

KDE:Backports

Application from Factory for released distributions

KDE:Community

Community maintained KDE applications

KDE:Playground

Development version of applications in distribution

KDE:KDE4

Unstable test builds of upcoming KDE 4



Questions?

<http://en.opensuse.org/Kickoff>

Novell®

General Disclaimer

This document is not to be construed as a promise by any participating company to develop, deliver, or market a product. Novell, Inc., makes no representations or warranties with respect to the contents of this document, and specifically disclaims any express or implied warranties of merchantability or fitness for any particular purpose. Further, Novell, Inc., reserves the right to revise this document and to make changes to its content, at any time, without obligation to notify any person or entity of such revisions or changes. All Novell marks referenced in this presentation are trademarks or registered trademarks of Novell, Inc. in the United States and other countries. All third-party trademarks are the property of their respective owners.

This work is licensed under the Creative Commons Attribution-Noncommercial-Share Alike 2.5 License. To view a copy of this license, visit <http://creativecommons.org/licenses/by-nc-sa/2.5/>.

For other licenses contact author.



Novell.



Corporate color palette and margins

These gray lines show the margins that need to be adhered too. If your slide content extends beyond the margins you may need to move to a full screen slide layout.

Most importantly keep the area under the logo clear

R 188
G 225
B 141

R 252
G 194
B 79

R 225
G 213
B 75

R 182
G 201
B 207

R 186
G 189
B 182

R 237
G 238
B 236

R 0
G 149
B 48

R 232
G 128
B 0

R 157
G 176
B 41

R 100
G 132
B 164

R 107
G 108
B 105

R 224
G 0
B 0

R 0
G 98
B 90

R 201
G 86
B 22

R 115
G 126
B 31

R 77
G 68
B 102

R 46
G 52
B 54

R 204
G 0
B 0

SUSE Palette

Yellow Palette

Green Palette

Blue Palette

Gray Palette

Misc