

KDE 4.0 on openSUSE 11

Stephan Binner - Will Stephenson

openSUSE.org



Novell.



Vortragsinhalte

- KDE bei openSUSE
- KDE auf openSUSE 11.0
- KDE 4.0 auf openSUSE 11.0
- Fragen / Diskussion



Novell's Unterstützung von KDE

- Patron von KDE e.V
- Sponsoring von Academy und anderen Entwicklertreffen
- Server-Hosting (svn.kde.org)
- Dashboard powered by SUSE build farm
- Build Service (Devel-Snapshot, Applikation-Projekte)
- Arbeitskraft
 - Vier Vollzeit-Entwickler in KDE-Team
 - 13 Mitglieder / Freund von anderen Teams
 - Community-Mitglieder



KDE Team bei openSUSE

Was machen wir?

build service

packaging

maintenance

kdebluetooth

kepas

knetworkmanager

applications

kpowersave

kerry

system settings

dashboard

kde.org

release team

KDE 4 live CD

products

openSUSE

SLED



openSUSE Build Service

KDE:KDE4:STABLE:

- Desktop: KDE Platform, workspace and core applications
- Extra-Apps: KOffice, Amarok, KDE extragear
- Community: even more, maintained by openSUSE community

KDE:KDE4:UNSTABLE:

- Desktop: KDE 4.1 development snapshot, weekly update
- Extra-Apps: various experimental applications
- Community: ..

“One-Click Install” von KDE 4.1 wird möglich sein.



openSUSE KDE 4 Live

- KDE 4 Live CD
 - regularly updated
 - providing KDE 4.0.x and KDE 4.1 snapshots
 - built using openSUSE KIWI
 - trivial to extend into a SDK version

`http://home.kde.org/~binner/kde-four-live/`



Zeitablauf

- SUSE Linux 5.2, 1998: KDE “beta 3”
- SUSE Linux 10.1 & SLE Desktop 10, 2006: KDE 3.5.1
- openSUSE 10.3, Oktober 2007
 - KDE 3.5.7 mit KDE 4.0 Beta 2 Preview, teils Default
- KDE 4.0 Veröffentlichung, Januar 2008
- openSUSE 11.0 Feature Freeze, April 2008
- openSUSE 11.0, Juni 2008
 - KDE 3.5.9 und KDE 4.0.4 mit KDE 4.1 Backports/kdepim
- KDE 4.1 Veröffentlichung, Juli 2008
- openSUSE 11.1, “Dezember 2008”
- SLE Desktop 11, “Erstes Halbjahr 2008”



Unser Angebot

- KDE 3.5.9 für die ultimative Stabilität
- KDE 4.0.4 bringt Innovation
 - Kontakt etc (KDEPIM) snapshot from KDE 4.1
 - Qt 4.4
- Beides ist auch möglich
- Deskopauswahl während der Installation
- Die andere Version kann nachher mit YaST installiert werden



Enthaltene Anwendungen

- Amarok 1.4.9.1
- K3b 1.0.4
- Digikam 0.9.3
- Auch weiterhin als KDE 3 Version enthalten
 - Kaffeine, KBluetooth, Kdetr, Konversation, Krita
 - KNetworkManager, KPowersave, Kerry
- und vieles mehr...



Medien-Layout von openSUSE 11.0

	KDE4 Live-CD	GNOME Live-CD	Download-DVD5	Retail-DVD9
Available architectures	x86 or x86_64	x86 or x86_64	x86, x86_64 or ppc	x86 + x86_64
Supported languages	en, de	en, de	way more	all of them
KDE 4.0.4	✓	✗	✓	✓
KDE 3.5.9	✗	✗	✓	✓
GNOME 2.22.1	✗	✓	✓	✓
Xfce 4.4.2	✗	✗	✓	✓
Firefox 3.0 Beta 5	✓	✓	✓	✓
OpenOffice.org 2.4	✓	✓	✓	✓
GIMP 2.4.5	✗	✗	✓	✓
Flash, Java, MP3 playback	✗	✗	✓	✓



DVD Installation Desktop-Auswahl

openSUSE 11.0

Preparation

- ✓ Welcome
- ✓ System Analysis
- ✓ Time Zone
- ▶ Desktop Selection
- Disk
- User Settings

Installation

- Installation Overview
- Perform Installation




Configuration

- Automatic Configuration

Desktop Selection

openSUSE offers you a choice of user interfaces. The two major complete desktops are KDE and GNOME. Both provide an easy-to-use desktop with a full suite of applications including email, a file manager, games and utilities.

As desktop selection is a matter of taste, we do not give a recommendation.

- **GNOME**
GNOME 2.22 is the latest desktop from the GNOME Project. It combines stability and maturity with incremental innovations. 
- **KDE 4.0**
KDE 4.0 is the most recent evolution of KDE. It comes with many new KDE technologies, but it is less mature than the other desktops. 
- **KDE 3.5**
KDE 3.5 is the previous generation of the K Desktop Environment. It is mature and stable. 
- **Other**



KDE 3.5.9 Bildschirmfoto

The screenshot displays the KDE 3.5.9 desktop environment. The desktop background is green. The top panel contains icons for Trash, Firefox, Office, openSUSE, and Online Help. The left sidebar shows icons for My Computer and Printer. A search bar is located below the sidebar. The main window is Konqueror, titled "My Computer - Konqueror", showing system information. The window title bar includes "Location", "Edit", "View", "Go", "Bookmarks", "Tools", "Settings", "Window", and "Help". The address bar shows "Location: sysinfo:/". The main content area is titled "My Computer" and contains several sections:

- Common Folders:** My Home Folder, Root Folder, Network Folders.
- CPU Information:** Processor (CPU): AMD Athlon(tm) 64 Processor 3100+, Speed: 800.00 MHz, Temperature: 34°C.
- Memory Information:** Total memory (RAM): 1,003.0 MB, Free memory: 74.6 MB (+ 668.1 MB Caches), Free swap: 1.2 GB.
- Disk Information:** A table showing disk details:

Device	Filesystem	Total space	Available space
SU110Bet.001	iso9660	50.0 MB	0.0 KB
Floppy Drive			50.0 MB
10G Media	ext3	9.8 GB	6.2 GB
			3.6 GB

- OS Information:** OS: Linux 2.6.25-rc9-17-default x86_64, Current user: tux@kollege, System: openSUSE 11.0 (x86_64) Beta1, KDE: 3.5.9 "release 26".
- Display Info:** Vendor: ATI Technologies Inc, Model: RV280 5961, Driver: radeon (3D Support).

The bottom panel shows the user "tux on kollege" and the "openSUSE" logo. The taskbar at the bottom includes icons for Favorites, Applications, Computer, History, and Leave, along with the system tray showing the time "07:48 pm".

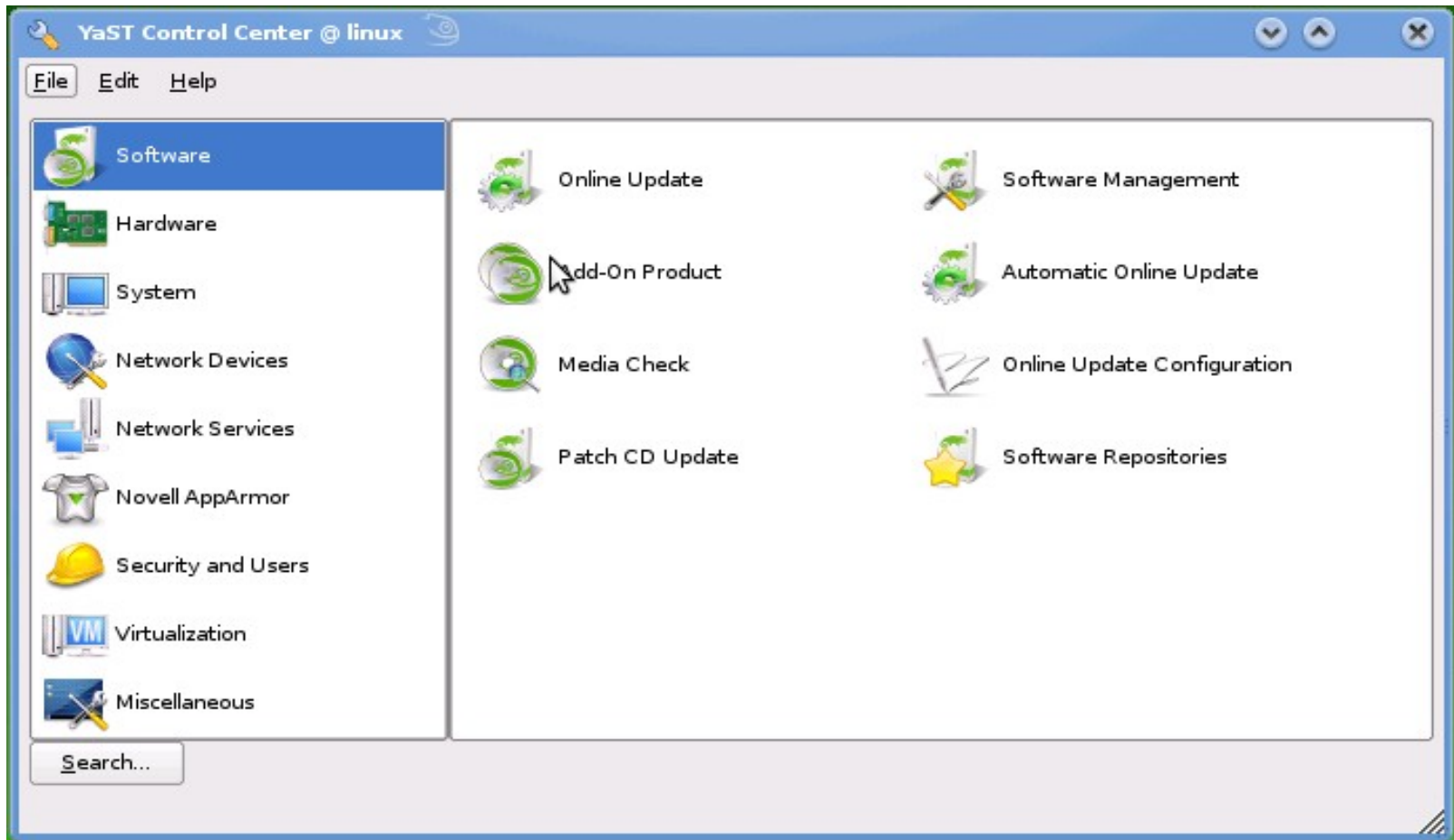


KDE 3 und KDE 4 nebeneinander

- Parallel installierbar
 - KDE 3: /opt/kde3 KDE 4: /usr
- PATH
 - /opt/kde3/bin/:/usr/bin /usr/bin:/opt/kde3/bin
- Auswahl der Sitzung im Login-Manager
- Konfigurationsverzeichnis
 - KDE 3: ~/.kde KDE 4: ~/.kde4
 - Stille Migration einiger Optionen bei erstem Start
- Unterscheidbarkeit im Startmenu von anderer Version
 - z.B. unter KDE3: “Konsole” & “Konsole/KDE4”
- Mehrere Integrationspatches: Autostart, Mime-types, ...

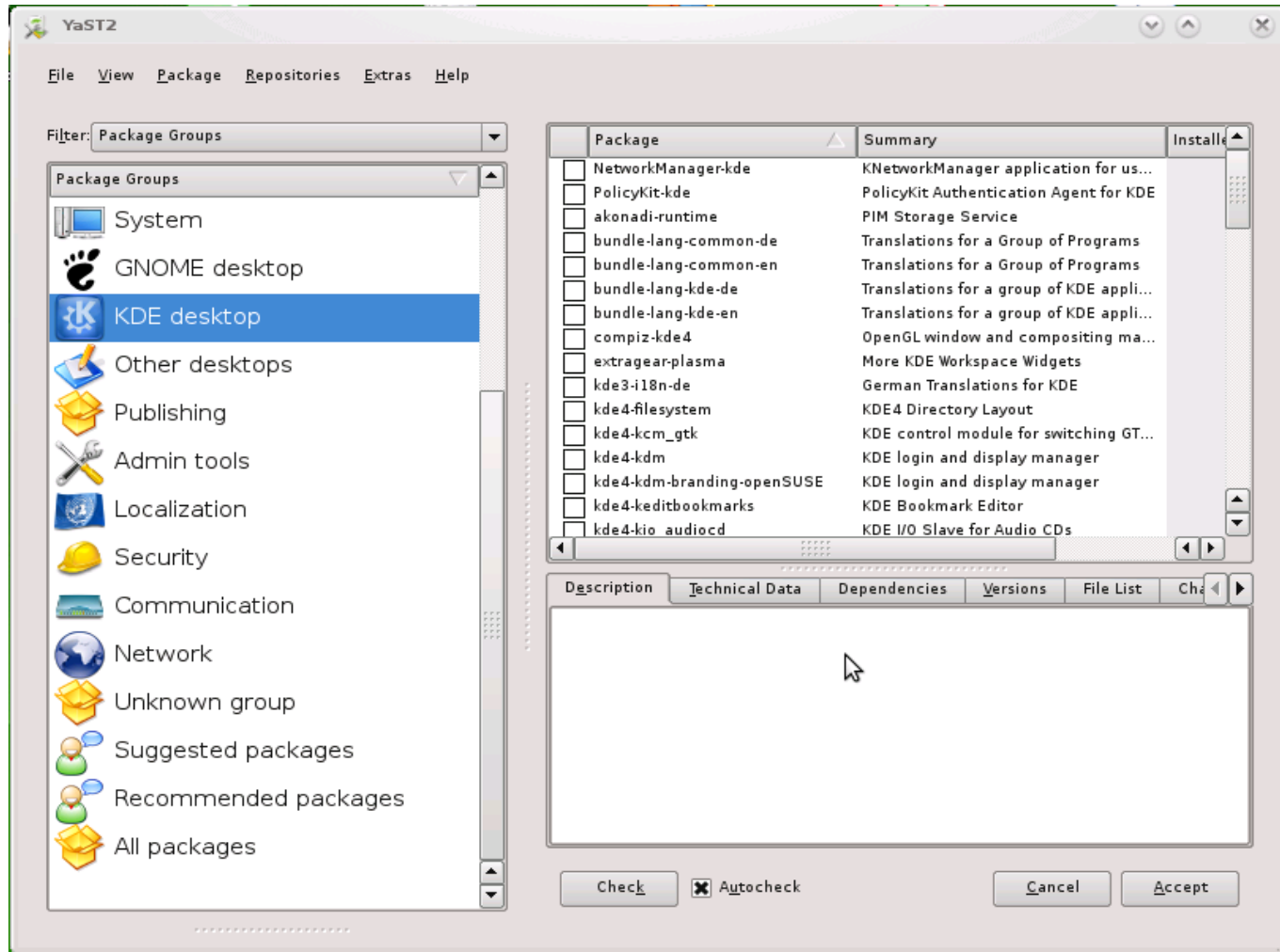


YaST Oxygen Iconset



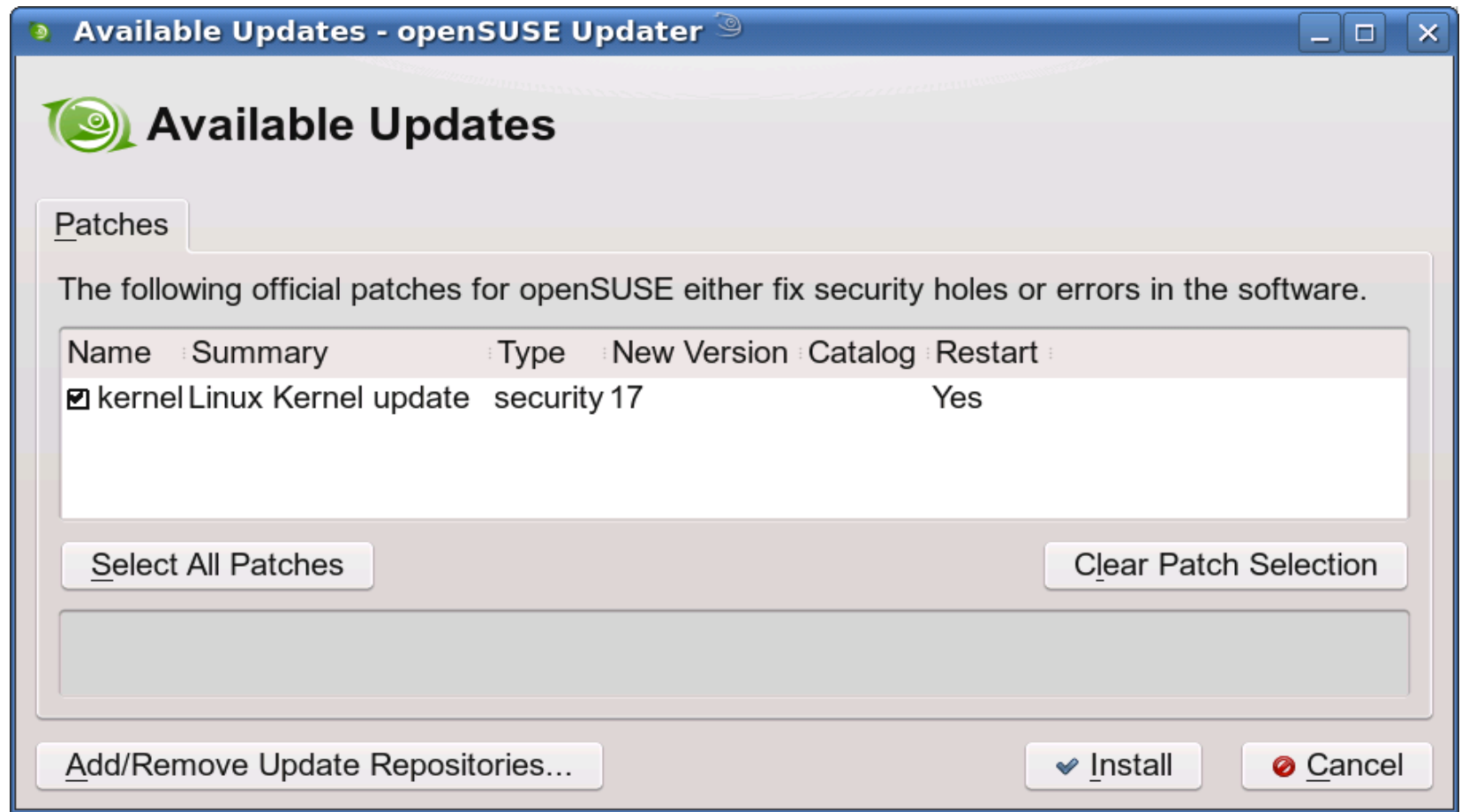


YaST Qt Packet Manager





KDE Online-Updater Applet





KDE 4.0 Packaging

- Feinkörnigere Paketaufsplittung
 - KDE3: kdebase3, kdeutils3 (enthält ark, kcalc, ...)
 - KDE4: kdebase4-runtime, kdebase4-workspace, kde4-ark
- Die meisten Applikationen heissen kde4-<appname>
 - gwenview v kde4-gwenview, yakuake v kde4-yakuake
- Ausnahmen bestätigen die Regel :-)...
 - dragonplayer, kepas, ksystemlog, ktorrent, okteta

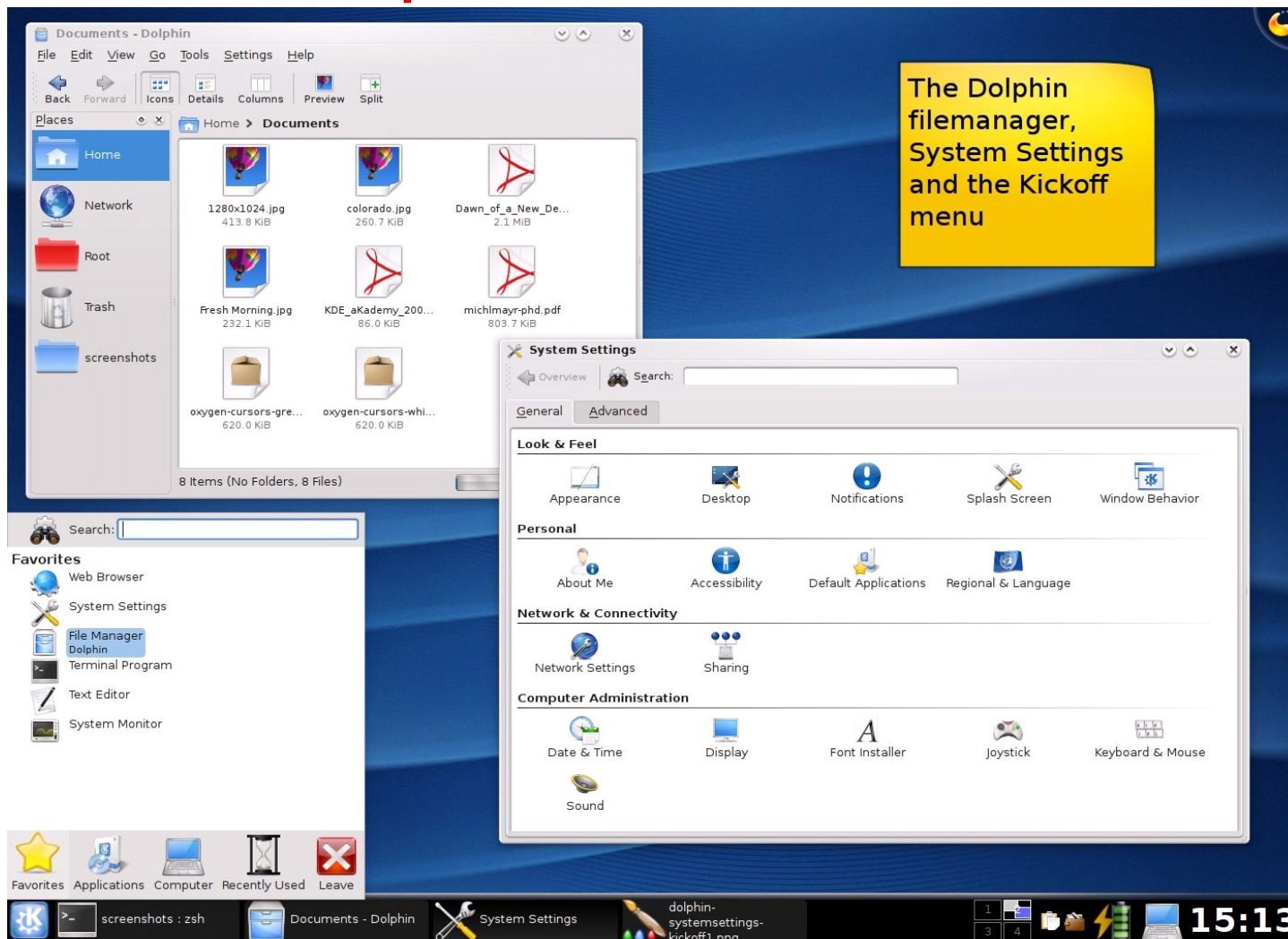


KDE 4.0 Neuigkeiten

- Schneller, flexibler, portabler
 - Benutzt viele desktopunabhängige Komponenten
- Plasma erlaubt Stil auf der Desktopoberfläche
- Oxygen: Elegante Icons und Widgets auf SVG-Basis
- Dolphin ist KDE's neuer Dateimanager pur
- Personal Settings: Übersichtliche Einstellungen
- KWin: 3D-Effekte ohne Frickelei, mit bewährtem Fenstermanagement
- Stichpunkte
 - Aufgeräumt, ohne Funktionalitätseinbuße
 - Integration ohne Komplikationen



KDE 4.0 Upstream Bildschirmfoto





Plasma

- KDE 3.5
 - Desktop / Wallpaper: kdesktop
 - Panel: kicker
 - Desktop-Widgets: superkaramba
- KDE 4.0
 - Desktop / Wallpaper / Panel / Widgets: Plasma
 - Basiert auf Qt 4.3 Technologie
 - Version “0.0.1”
- KDE 4.1
 - Benutzt neue Qt 4.4 Technologien
 - Inkompatibel zum Plasma von KDE 4.0



Plasma Änderungen von openSUSE

- Plasma basierend auf KDE 4.0 Version
- Zwei Backport-Wochenenden (4.0.2 und 4.0.3)
- Anderes Standard-Aussehen, Aussehen umschaltbar
- Panel hinzufügen, Bewegen von Plasmoids auf Panel
- Trashcan auf Desktop, abschalten von Plasmoid-Schatten
- Verstecken von nicht-implementierter Funktionalität
- Startmenu Aussehen von 4.1, neue Funktionen
- Neue Plasmoid-Optionen von KDE Trunk/4.1
- Desktop Icons Verwirrung Flicker
- Desktop “Cashew” versteckbar (non-GUI Option)



KDEPIM 4.1 beta 1 auf der 11.0

- KDEPIM 4.1 beta 1
- Testrunden in der opensuse-kde Community
- Mit aus der SVN trunk ausgewählten Fixes verfeinert
- Im Grunde stabil und alltagstauglich
 - Einige Macken gibt es doch.
- Wird mittels Online-Update baldmöglichst mit 4.1 final ersetzt



KDEPIM 4.1 beta 1 auf der 11.0

Was tut

- KMail
- KOrganizer
- KAddressBook
- Kontact allgemein

Was nicht so tut

- Kontaktintegration von KTimeTracker
- KPilot
- Kleopatra (Zertifikatsverwaltung)
- Offlinemodeunterstützung der 3.5.9 (SUSE-Patch)



Netzwerkkonfiguration

NetworkManager 0.7 bringt Neues:

- Einwählen mit UMTS/GSM/Mobilfunkgeräte
- DSL
- Mehrere Netzwerkschnittstellen dürfen gleichzeitig aktiv sein

KNetworkManager wurde entsprechend überarbeitet

- KDE 3 applet, läuft jedoch auch unter KDE 4
- Ein KDE 4 Plasmoid ist in der Vorbereitung, kommt in OBS



Mitmachen

- <http://en.opensuse.org/KDE>
- opensuse-kde Mailing Liste
- #opensuse-kde IRC Kanal
 - Alle 2 Wochen Team-Meeting
- Build Service Repositories
 - KDE:Backports
 - KDE4:STABLE:Community
 - KDE4:UNSTABLE:Community



Fragen / Diskussion

en.opensuse.org/KDE

build service

packaging

maintenance

dashboard

kde.org

release team

KDE 4 live CD

products

openSUSE

SLED



kdebluetooth

kepas

knetworkmanager

applications

kpowersave

kerry

system settings

General Disclaimer

This document is not to be construed as a promise by any participating company to develop, deliver, or market a product. Novell, Inc., makes no representations or warranties with respect to the contents of this document, and specifically disclaims any express or implied warranties of merchantability or fitness for any particular purpose. Further, Novell, Inc., reserves the right to revise this document and to make changes to its content, at any time, without obligation to notify any person or entity of such revisions or changes. All Novell marks referenced in this presentation are trademarks or registered trademarks of Novell, Inc. in the United States and other countries. All third-party trademarks are the property of their respective owners.

This work is licensed under the Creative Commons Attribution-Noncommercial-Share Alike 2.5 License. To view a copy of this license, visit <http://creativecommons.org/licenses/by-nc-sa/2.5/>.

For other licenses contact author.



Novell.

Novell®



Corporate color palette and margins

These gray lines show the margins that need to be adhered to. If your slide content extends beyond the margins you may need to move to a full screen slide layout.

Most importantly keep the area under the logo clear

R 188
G 225
B 141

R 252
G 194
B 79

R 225
G 213
B 75

R 182
G 201
B 207

R 186
G 189
B 182

R 237
G 238
B 236

R 0
G 149
B 48

R 232
G 128
B 0

R 157
G 176
B 41

R 100
G 132
B 164

R 107
G 108
B 105

R 224
G 0
B 0

R 0
G 98
B 90

R 201
G 86
B 22

R 115
G 126
B 31

R 77
G 68
B 102

R 46
G 52
B 54

R 204
G 0
B 0

SUSE Palette

Yellow Palette

Green Palette

Blue Palette

Gray Palette

Misc